

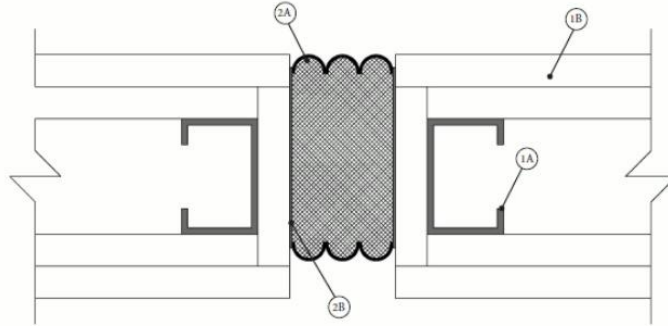
System No. WW-D-0134

October 5, 2013

Assembly Rating — 1 or 2 Hr

Nominal Joint Width - 1/2 to 1-7/8 in. (13-48 mm)

Class II and III Movement Capabilities —50 % Compression or Extension



1. Wall Assembly — The 1 or 2 hr fire rated gypsum wallboard/steel stud wall assembly shall be constructed of the materials and in the manner described in the individual U300, U400, V400 or W400 -Series Wall or Partition Design in the UL Fire Resistance Directory and shall include the following construction features:

A. **Studs** — Wall framing may consist of either wood studs or steel channel studs. Wood studs to consist of nom 2 by 4 in. (50 by 100 mm) (or larger) lumber spaced 16 in. (400 mm) OC. Steel studs to be min 3-5/8 in. (92 mm) wide and spaced max 24 in. (610 mm) OC.

B. **Gypsum Board*** — Wallboard sheets to be installed to a min total thickness of 5/8 (15.9 mm) or 1-1/4 in. (31.75 mm) on each side of the wall for a 1 or 2 hr rated assemblies, respectively. Additional wallboard sheets installed to a min total thickness of 5/8 (15.9 mm) or 1-1/4 in. (31.75 mm) within the opening on each side of opening for a 1 or 2 hr rated assemblies, respectively.

The hourly fire rating of the joint system is dependent on the hourly fire rating of the wall.

2. Joint System — Nominal width of joint is 1/2 to 1-7/8 in. (13 to 48 mm). The joint system is designed to accommodate a max 50 percent compression or extension from its installed width. The joint system shall consist of the following:

Config A: (Nominal 1/2 in. joint)

A. **Mechanical Joint Assembly*** — Compressed, fire-retardant impregnated, 4 in. (102 mm) deep foam coated or uncoated on one or both sides with factory applied sealant. Foam is installed in joint opening as a permanent form.

WILLSEAL L L C — FR Joint, FR Joint UC

B. **Sealant Band** — (Optional) — Watertight 3/4 in. (19 mm) deep silicone sealant band and corner bead supplied by joint system manufacturer, and installed in accordance with installation instruction.

C. **Epoxy adhesive** — Consists of two parts; part A (base), and part B (hardener) or one part gun grade adhesive. The adhesive is supplied by joint system manufacturer, and installed in accordance with installation instructions.

Config B: (Nominal 1/2 to 1-7/8 in. joint)

A. **Mechanical Joint Assembly*** — Compressed, fire-retardant impregnated, 4 in. (102 mm) deep foam uncoated or coated on one or both sides with factory applied sealant. Foam is installed in joint opening as a permanent form.

WILLSEAL L L C — FR Joint, FR Joint UC

B. **Epoxy adhesive** — Consists of two parts; part A (base), and part B (hardener) or one part gun grade adhesive. The adhesive is supplied by joint system manufacturer, and installed in accordance with installation instructions.

*Bearing the UL Classification Mark

Reprinted from the Online Certifications Directory with permission from UL

© 2013 UL LLC

