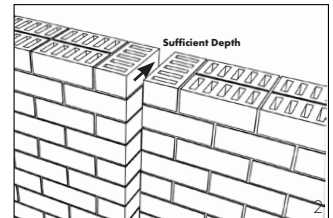
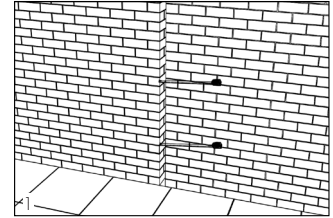


RECOMMENDED TOOLS

Tape Measure • Sharp Knife • Blue Painters Tape • Mineral Spirits
Clean Cloth • Blunt Putty Knife • Caulking Gun • Caulking Trowel

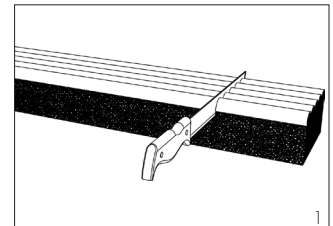
MATERIAL SIZING

- Joints must be sized every 5-7 ft (1.524-2.137 m) to ensure gap opening is uniform (1)
- Allow sufficient depth for the material to be recessed 1/8" into the joint (2)



MATERIAL PREPARATION

- Store material at a minimum of 68°F (20°C) for a minimum of 24 hours prior to installation, regardless of temperature at location of installation
- Store materials in a dry, enclosed area, making sure materials are off the ground and out of direct sunlight
- Use a sharp knife to cut the material square. All starting and ending pieces must be square to termination point (1)
- Apply mineral spirits to the knife for a smoother cut
- Refer to the Seams section for further instruction on preparing the material

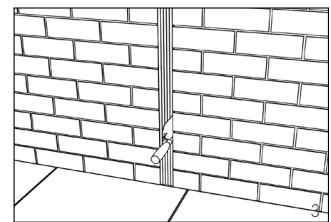
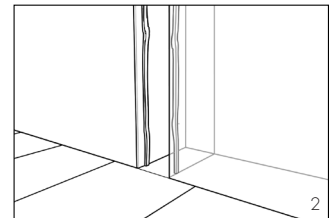
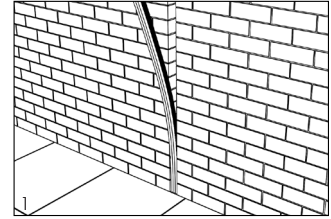


JOINT PREPARATION

- Verify that the joint is clean, sound, and will provide an appropriate surface for installation of the joint sealant
 - Use compressed air to clean any loose debris from the joint
 - Apply water or alcohol to a clean cloth and wipe the joint walls to the depth of the sealant material plus 1"
- Verify that the joint is uniform and repair any spalls prior to installation
- Apply blue painters tape to both edges of the joint surface to prevent the silicone from contacting the substrate surface
- Check the material for appropriate length, width, and depth
 - Supplied material should be approximately 25% larger but never less than 12% larger than the intended joint opening
 - Joint depth must allow for the installed material to be recessed 1/8" from the substrate surface

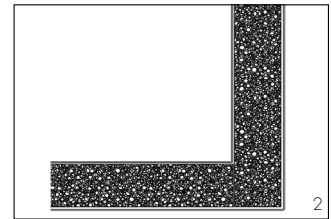
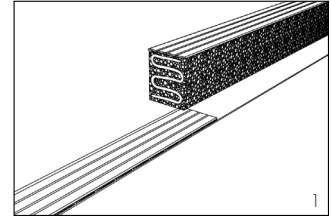
SEALANT INSTALLATION

- Begin installation at the bottom of the joint and work upward (1)
- When a continuous joint cannot be finished, the silicone on the substrate should stop at the last stick installed and silicone should not be applied to the end of the installed material until the next piece of material is ready to be installed
- Run a 1/4" bead of the supplied silicone adhesive along both sides of the joint wall approximately 1/2" - 3/4" back from the substrate (2)
- The silicone will act as a lubricant during installation
- To ensure an aesthetic finish, verify that the silicone adhesive matches the color on the face of the joint sealant material
- Do not allow the silicone to dry before installing the material into the joint
- Verify that the material is cut square at both ends for proper seams. All pieces must be square to the termination point
- Install the material by inserting one side approximately 1" into the joint
- Do not excessively push or pull the material as this will cause it to stretch, resulting in possible damage
- Use a blunt putty knife or your hand to compress the opposite side of the material and slide it into the joint (3)
- Use of sharp tools could cause damage to the joint sealant material. Be careful not to tear the material in the process of compressing it into the joint
- Continue to compress and work the material into the joint until the sides are approximately 1/8" back from the substrate surface
 - Silicone coating should be flush with, but not protruding above, the substrate surface
- For joints greater than 10":
 - Use the supplied Flexible Seal adhesive instead of the silicone for adhesion to the joint walls
 - Additionally, run two (2) beads of silicone along both joint walls, one near the surface and the other about 2" deeper. This will provide greater bond strength required for a wider joint
 - Follow normal procedures for the rest of the installation



SEAMS

- Verify that the new piece of material is cut square and not at an angle to the previous material installed
- Apply silicone to the butt end of the new piece of material as well as a 1/4" bead on both joint walls, inset 1/8" as described in the Sealant Installation section (1)
- T" and "+" Intersections (2)
 - Butt the vertical material up to the overhead horizontal material following steps 1+2
- After installation, if there are any mitered joints with a hole or a void, use the supplied silicone to fill and seal the joint
- Tool the silicone over all seams and transitions using a small caulking tool



FINISH

- Use the supplied silicone to run a bead along each edge of the joint to fill any irregularities in the substrate (optional)
- To ensure an aesthetic finish, verify that the silicone adhesive matches the color on the face of the joint sealant material
- The material does not rely on the external fillet bead to provide a watertight seal
- Evenly spread the silicone on exposed seams to allow for a clean, aesthetic finish
- Remove any excess silicone left on the surface of the material or substrate. Do not allow the silicone to cure before removal
- Remove the blue painters tape from the joint surface