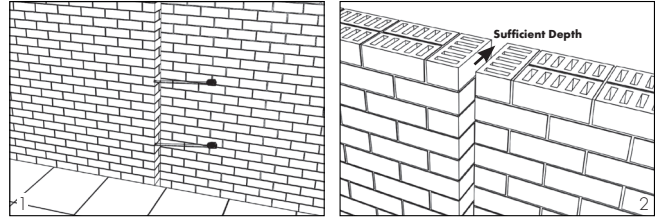


## RECOMMENDED TOOLS

- Tape Measure • Sharp Knife • Miter Saw • Utility Knife • Duct Tape • Mineral Spirits  
Clean Cloth • Isopropyl Alcohol • Margin Trowel • Heat Gun • Compressed Air

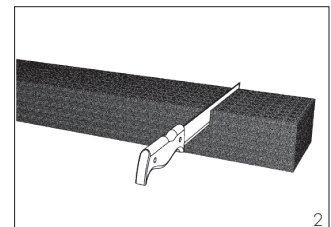
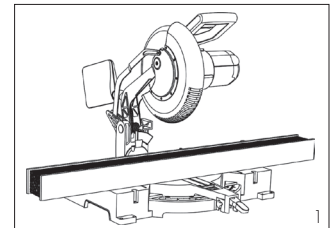
## MATERIAL SIZING

- Joints must be sized every 5-7 ft (1.524-2.137 m) to ensure gap opening is uniform (1)
- Joint material can be flush with the substrate surface if necessary; However, it is recommended to allow sufficient depth for the material to be recessed 1/8"-1/4" into the joint (2)



## MATERIAL PREPARATION

- Store material at a minimum of 68°F (20°C) for a minimum of 24 hours prior to installation, regardless of temperature at location of installation
- Store materials in a dry, enclosed area, making sure materials are off the ground and out of direct sunlight
- Cutting Details - Roll Material
  - Do not make any cuts until ready to install the material
  - Refer to the Sealant Installation (Rolls) section for further instruction on cutting the roll material
- Cutting Details - Stick Material
  - Use a miter saw to make any cuts to the material before removing the clear shrink packaging. All starting and ending pieces must be square to the termination point (1)
  - Use a sharp knife to make any cuts after the clear shrink packaging has been removed (2)
- Apply mineral spirits to the knife for a smoother cut
- Install the material directly after removing the packaging to ensure the material does not expand past the joint width
- Refer to the Seams section for further instruction on preparing the material

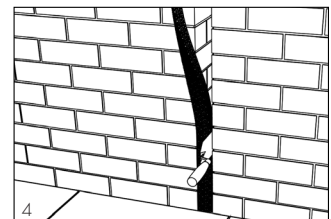
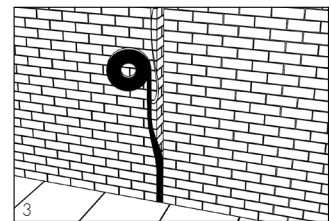
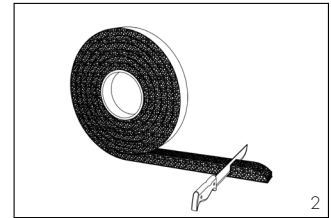
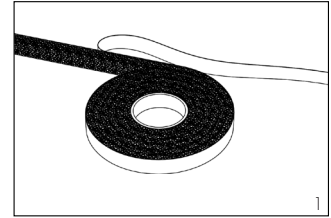


## JOINT PREPARATION

- Verify that the joint is clean, sound, and will provide an appropriate surface for installation of the joint sealant
  - Use compressed air to clean any loose debris from the joint
  - Apply water or alcohol to a clean cloth and wipe the joint walls to the depth of the sealant material plus 1"
- Verify that the joint is uniform and repair any spalls prior to installation
- Check the material for appropriate length, width, and depth
  - Supplied material should be pre-compressed to a size smaller than the intended joint opening
  - Joint depth must allow for the installed material to be recessed 1/4" from the substrate surface

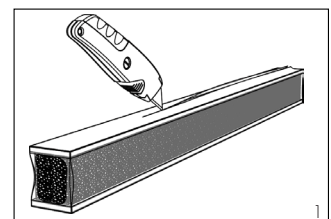
## SEALANT INSTALLATION - ROLLS

- When fully prepared to install, remove the outer lining surrounding the joint material (1)
- Be prepared to install the material immediately once the packaging is removed to prevent the material from expanding past the joint width
- Material will expand faster when hot and slower when cold. In cold temperatures, store the material in a heated area 24 hours prior to installation. In hot temperatures, store the material out of direct sunlight and not in an enclosed storage container where temperatures may exceed 100°F
- Cut off the first and last 1"-2" of material using a sharp knife/utility knife (2)
  - Verify that the material is cut square at both ends for proper seams (Refer to the Seams section for more details)
  - All pieces must be square to the termination point
- If the joint runs horizontal, begin installing the material at one side of the joint (either side) and continue to install the material working towards the opposite end. For vertical joints begin installation at the bottom of the joint and work upward (3)
  - The installed rolls will support the subsequent rolls until the material fully expands
- Remove the release liner as the material is installed
- Place the material into the joint while gently pushing the pressure sensitive adhesive (PSA) up against the side of the substrate. Once the material is in place, use a margin trowel to firmly press the adhesive to the substrate and allow the material to expand to fill the joint (4)
- If the PSA is hampering installation, apply a small amount of isopropyl alcohol or a mist of water to the adhesive side of the material. This will not impact the final sealing properties
- If the PSA is not sticking to the substrate, use wooden wedges to hold the material in place while the material expands. Once the material has expanded, the wedges can be removed
- Allow 72 hours for full expansion and material equalization. Expansion and equalization rates are affected by temperature. Material will expand faster when hot and slower when cold



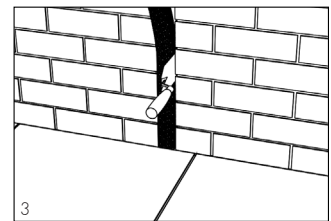
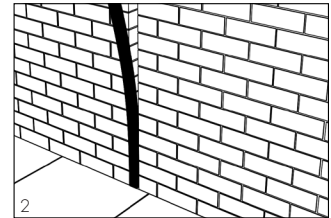
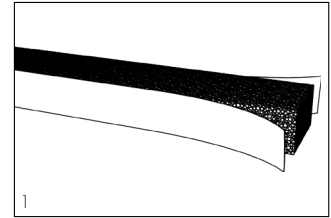
## SEALANT INSTALLATION - STICKS

- When fully prepared to install, cut the shrink packaging along the edge of the masonite strapping (1)
- Be prepared to install the material immediately once the packaging is removed to prevent the material from expanding past the joint width
- Material will expand faster when hot and slower when cold. In cold temperatures, store the material in a heated area 24 hours prior to installation. In hot temperatures, store the material out of direct sunlight and not in an enclosed storage container where temperatures may exceed 100°F



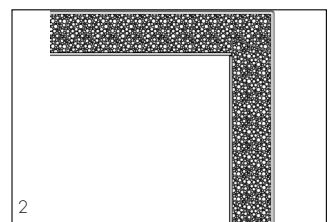
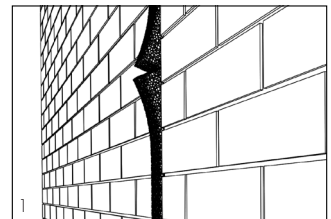
## SEALANT INSTALLATION - STICKS (CONTINUED)

- Verify that the material is cut square at both ends for proper seams. All pieces must be square to the termination point
- Remove the release liner on both sides (1)
- Refer to the Material Preparation and Seams section for further instruction
- For joints that run horizontal, begin installing the material at one side of the joint (either side) and continue to install the material working towards the opposite end. For vertical joints, begin installation at the bottom of the joint and work upward (2)
  - The installed sticks will support the subsequent sticks until the material fully expands
  - Use a putty knife to press the material against the joint wall. This will activate the pressure sensitive adhesive (PSA) and further help to support the material during expansion (3)
- If the PSA is hampering installation, apply a small amount of isopropyl alcohol or a mist of water to the adhesive side of the material. This will not impact the final sealing properties
- If the PSA is not sticking to the substrate, use wooden wedges to hold the material in place while the material expands. Once the material has expanded, the wedges can be removed
- Allow 72 hours for full expansion and material equalization. Expansion and equalization rates are affected by temperature. Material will expand faster when hot and slower when cold



## SEAMS - BUTT SEAMS

- Verify that the new piece of material is cut square and not at an angle to the previous piece installed
- Overlap extra material (approximately 1/2" - 1") at seams and splices to ensure that the seam is in compression after installation (1)
- "T" and "+" intersections
  - Install horizontal material first
  - Butt the vertical material up to the horizontal material following Steps 1+2



## SEAMS - MITER SEAMS

- For joint corners, seam the material at a 45° angle cut (Refer to the Material Preparation section for further information) (2)

## FINISH

- Allow 72 hours for full expansion and material equalization (1)

